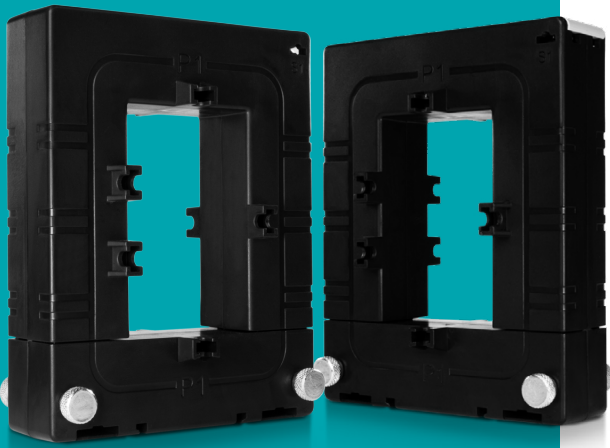


AcuCT 5A Series

AcuCT-2031

5A Split-Core Current Transformer Datasheet



The AcuCT 5A Series is a rugged, compact split-core current transformer designed with either 1A or 5A industrial output. Choose from multiple sizes & input ranges to adapt to a variety of special project requirements. The helpful split-core design is easy to install and does not require disconnection of cables or wires.

Features

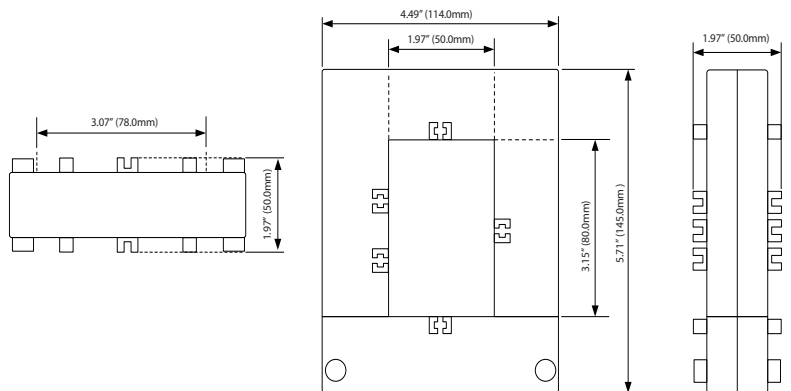
- Revenue grade accuracy: IEC 61869-2 Class 0.5 (from 5% - 120% of rated current)
- Choose from 1A or 5A industrial standard output
- Split-core design streamlines installation
- Included accessories provide multiple mounting options
- UL Recognized



Specifications

RATED CURRENT	
Current Range	5% - 120% of Rated Current
Output	5A, 1A
Accuracy	IEC 61869-2 Class 0.5
MECHANICAL/ENVIRONMENTAL	
Form Factor	Split-Core CT
Window Size	50.0mm x 80.0mm (1.97" x 3.15")
Exterior Dimensions	114.0mm x 145.0mm x 50.0mm 4.49" x 5.71" x 1.97"
Case Material	UL 94V-0 Rated Flame Retardant
Lead Wires	1000mm (3.28ft), 16AWG UL 1015 Twisted Pair
Operating Temperature	-15°C to 60°C / 5°F to 140°F
Operating Humidity	Non-Condensing, 0 to 95% RH
Installation Conditions	Indoor Use
ELECTRICAL	
Wire Polarity	White=Positive, Black=Negative
Phase Orientation	Arrow Points Towards Load
Frequency Range	50 - 400Hz
Burden	2.5VA
SAFETY/COMPLIANCE	
Withstand Voltage	3.0kV / 1mA / 1min
Rated Voltage	600VAC
Certifications	CE, RoHS, cURus (E359521), IEC 61869-2

Dimensions



Typical Parameter

MODEL	CURRENT RATIO	ACCURACY CLASS	BURDEN/ RESISTANCE	LEAD LENGTH
AcuCT-2031-250: 1A	250/1A	1.00%	2.5VA	1m
AcuCT-2031-400: 1A	400/1A	IEC 61869-2 Class 0.5	2.5VA	1m
AcuCT-2031-500: 1A	500/1A	IEC 61869-2 Class 0.5	2.5VA	1m
AcuCT-2031-600: 1A	600/1A	IEC 61869-2 Class 0.5	2.5VA	1m
AcuCT-2031-800: 1A	800/1A	IEC 61869-2 Class 0.5	2.5VA	1m
AcuCT-2031-1000: 1A	1000/1A	IEC 61869-2 Class 0.5	2.5VA	1m
AcuCT-2031-250: 5A	250/5A	1.00%	2.5VA	1m
AcuCT-2031-400: 5A	400/5A	IEC 61869-2 Class 0.5	2.5VA	1m
AcuCT-2031-500: 5A	500/5A	IEC 61869-2 Class 0.5	2.5VA	1m
AcuCT-2031-600: 5A	600/5A	IEC 61869-2 Class 0.5	2.5VA	1m
AcuCT-2031-800: 5A	800/5A	IEC 61869-2 Class 0.5	2.5VA	1m
AcuCT-2031-1000: 5A	1000/5A	IEC 61869-2 Class 0.5	2.5VA	1m

Ordering Information

Model	-	Rated Input	:	Rated Output
AcuCT-2031		250: 250A		5: 5A
		400: 400A		1: 1A
		600: 600A		
		800: 800A		
		1000: 1000A		

Ordering Example	AcuCT-2031	-	600	:	5A
-------------------------	-------------------	----------	------------	----------	-----------



Accuenergy Inc.

Los Angeles - Toronto - Pretoria
 North America Toll Free: 1-877-721-8908
 Web: www.accuenergy.com
 Email: marketing@accuenergy.com

Revision Date: March 2026 Version: 1.0.4
 Specs Subject To Change Without Notice.