

ACCUEVERGY

# AcuCT 5A Series

5A Split-Core Current Transformer

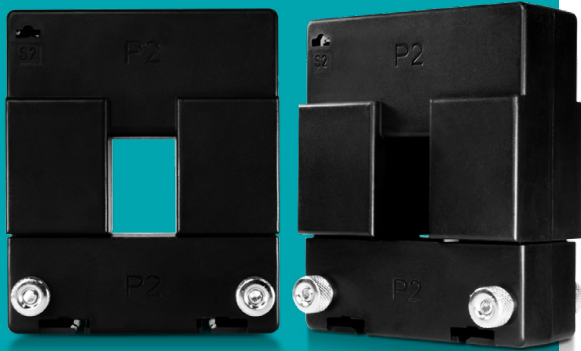


D A T A S H E E T

# AcuCT 5A Series

## AcuCT-0812

5A Split-Core Current Transformer Datasheet



The AcuCT 5A Series is a rugged, compact split-core current transformer designed with either 1A or 5A industrial output. Choose from multiple sizes & input ranges to adapt to a variety of special project requirements. The helpful split-core design is easy to install and does not require disconnection of cables or wires.

### Features

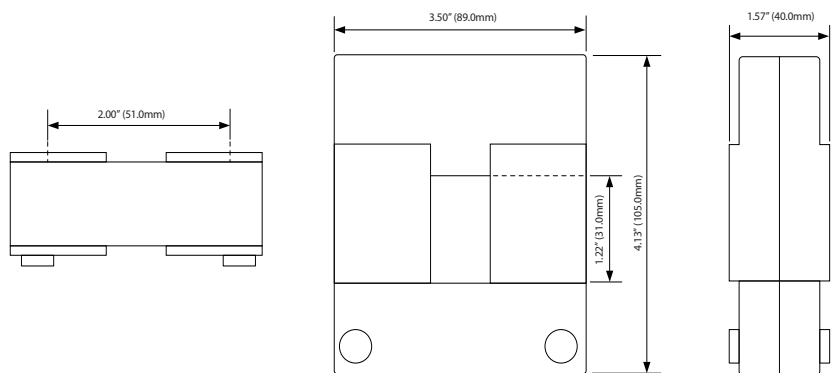
- Revenue grade accuracy: 0.5%
- Choose from 1A or 5A industrial standard output
- Split-core design streamlines installation
- Included accessories provide multiple mounting options
- UL Recognized



### Specifications

<b>RATED CURRENT</b>	
Current Range	50A, 100A, 150A, 200A, 250A, 300A, 400A
Output	5A, 1A
Accuracy	0.5%
<b>MECHANICAL/ENVIRONMENTAL</b>	
Form Factor	Split-Core CT
Window Size	21.0mm x 31.0mm (0.83" x 1.22")
Exterior Dimensions	89.0mm x 105.0mm x 40.0mm 3.50" x 4.13" x 1.57"
Case Material	UL 94V-0 Rated Flame Retardant
Lead Wires	1000mm (3.28ft), 16AWG UL 1015 Twisted Pair
Operating Temperature	-15°C to 60°C / 5°F to 140°F
Operating Humidity	Non-Condensing, 0 to 95% RH
Installation Conditions	Indoor Use
<b>ELECTRICAL</b>	
Wire Polarity	White=Positive, Black=Negative
Phase Orientation	Arrow Points Towards Load
Frequency Range	50 - 400Hz
Burden	2.5VA
<b>SAFETY/COMPLIANCE</b>	
Withstand Voltage	3.0KV / 1mA / 1min
Rated Voltage	600VAC
Certifications	CE, RoHS, cURus (E359521)

### Dimensions



## Typical Parameter

MODEL	CURRENT RATIO	ACCURACY CLASS	BURDEN/ RESISTANCE	LEAD LENGTH
AcuCT-0812-50: 1A	50/1A	1.00%	2.5VA	1m
AcuCT-0812-100: 1A	100/1A	1.00%	2.5VA	1m
AcuCT-0812-150: 1A	150/1A	1.00%	2.5VA	1m
AcuCT-0812-200: 1A	200/1A	1.00%	2.5VA	1m
AcuCT-0812-250: 1A	250/1A	0.50%	2.5VA	1m
AcuCT-0812-300: 1A	300/1A	0.50%	2.5VA	1m
AcuCT-0812-400: 1A	400/1A	0.50%	2.5VA	1m
AcuCT-0812-50: 5A	50/5A	1.00%	2.5VA	1m
AcuCT-0812-100: 5A	100/5A	1.00%	2.5VA	1m
AcuCT-0812-150: 5A	150/5A	1.00%	2.5VA	1m
AcuCT-0812-200: 5A	200/5A	1.00%	2.5VA	1m
AcuCT-0812-250: 5A	250/5A	0.50%	2.5VA	1m
AcuCT-0812-300: 5A	300/5A	0.50%	2.5VA	1m
AcuCT-0812-400: 5A	400/5A	0.50%	2.5VA	1m

## Ordering Information

Model	-	Rated Input	:	Rated Output
AcuCT-0812		50: 50A		5: 5A
		100:100A		1: 1A
		150: 150A		
		200: 200A		
		250: 250A		
		300: 300A		
		400: 400A		

<b>Ordering Example</b>	<b>AcuCT-0812</b>	<b>-</b>	<b>200</b>	<b>:</b>	<b>5A</b>
-------------------------	-------------------	----------	------------	----------	-----------



### Accuenergy Inc.

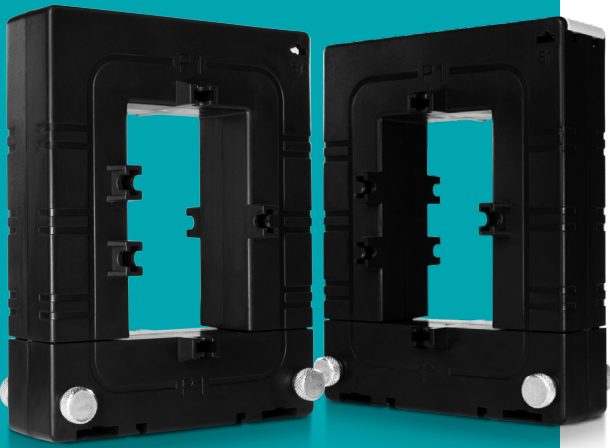
Los Angeles - Toronto - Pretoria  
 North America Toll Free: 1-877-721-8908  
 Web: [www.accuenergy.com](http://www.accuenergy.com)  
 Email: [marketing@accuenergy.com](mailto:marketing@accuenergy.com)

Revision Date: April 2026 Version: 1.0.5  
 Specs Subject To Change Without Notice.

# AcuCT 5A Series

## AcuCT-2031

5A Split-Core Current Transformer Datasheet



The AcuCT 5A Series is a rugged, compact split-core current transformer designed with either 1A or 5A industrial output. Choose from multiple sizes & input ranges to adapt to a variety of special project requirements. The helpful split-core design is easy to install and does not require disconnection of cables or wires.

### Features

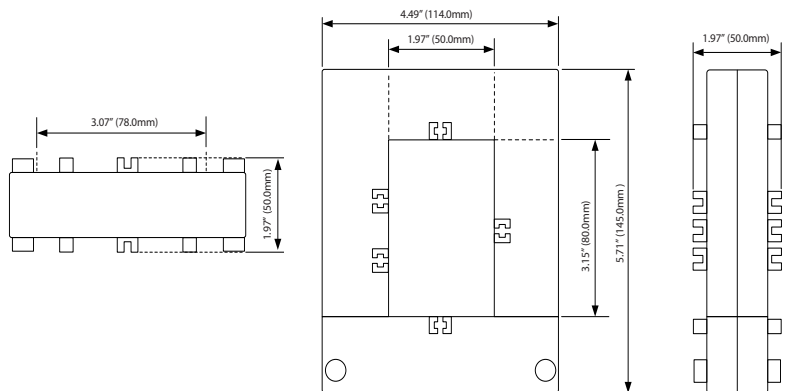
- Revenue grade accuracy: IEC 61869-2 Class 0.5 (from 5% - 120% of rated current)
- Choose from 1A or 5A industrial standard output
- Split-core design streamlines installation
- Included accessories provide multiple mounting options
- UL Recognized



### Specifications

<b>RATED CURRENT</b>	
Current Range	5% - 120% of Rated Current
Output	5A, 1A
Accuracy	IEC 61869-2 Class 0.5
<b>MECHANICAL/ENVIRONMENTAL</b>	
Form Factor	Split-Core CT
Window Size	50.0mm x 80.0mm (1.97" x 3.15")
Exterior Dimensions	114.0mm x 145.0mm x 50.0mm 4.49" x 5.71" x 1.97"
Case Material	UL 94V-0 Rated Flame Retardant
Lead Wires	1000mm (3.28ft), 16AWG UL 1015 Twisted Pair
Operating Temperature	-15°C to 60°C / 5°F to 140°F
Operating Humidity	Non-Condensing, 0 to 95% RH
Installation Conditions	Indoor Use
<b>ELECTRICAL</b>	
Wire Polarity	White=Positive, Black=Negative
Phase Orientation	Arrow Points Towards Load
Frequency Range	50 - 400Hz
Burden	2.5VA
<b>SAFETY/COMPLIANCE</b>	
Withstand Voltage	3.0kV / 1mA / 1min
Rated Voltage	600VAC
Certifications	CE, RoHS, cURus (E359521), IEC 61869-2

### Dimensions



## Typical Parameter

MODEL	CURRENT RATIO	ACCURACY CLASS	BURDEN/ RESISTANCE	LEAD LENGTH
AcuCT-2031-250: 1A	250/1A	1.00%	2.5VA	1m
AcuCT-2031-400: 1A	400/1A	IEC 61869-2 Class 0.5	2.5VA	1m
AcuCT-2031-500: 1A	500/1A	IEC 61869-2 Class 0.5	2.5VA	1m
AcuCT-2031-600: 1A	600/1A	IEC 61869-2 Class 0.5	2.5VA	1m
AcuCT-2031-800: 1A	800/1A	IEC 61869-2 Class 0.5	2.5VA	1m
AcuCT-2031-1000: 1A	1000/1A	IEC 61869-2 Class 0.5	2.5VA	1m
AcuCT-2031-250: 5A	250/5A	1.00%	2.5VA	1m
AcuCT-2031-400: 5A	400/5A	IEC 61869-2 Class 0.5	2.5VA	1m
AcuCT-2031-500: 5A	500/5A	IEC 61869-2 Class 0.5	2.5VA	1m
AcuCT-2031-600: 5A	600/5A	IEC 61869-2 Class 0.5	2.5VA	1m
AcuCT-2031-800: 5A	800/5A	IEC 61869-2 Class 0.5	2.5VA	1m
AcuCT-2031-1000: 5A	1000/5A	IEC 61869-2 Class 0.5	2.5VA	1m

## Ordering Information

Model	-	Rated Input	:	Rated Output
AcuCT-2031		250: 250A		5: 5A
		400: 400A		1: 1A
		600: 600A		
		800: 800A		
		1000: 1000A		

### Ordering Example

AcuCT-2031 - 600 : 5A



### Accuenergy Inc.

Los Angeles - Toronto - Pretoria  
 North America Toll Free: 1-877-721-8908  
 Web: [www.accuenergy.com](http://www.accuenergy.com)  
 Email: [marketing@accuenergy.com](mailto:marketing@accuenergy.com)

Revision Date: March 2026 Version: 1.0.4  
 Specs Subject To Change Without Notice.

# AcuCT 5A Series

## AcuCT-3147

5A Split-Core Current Transformer Datasheet



The AcuCT 5A Series is a rugged, compact split-core current transformer designed with either 1A or 5A industrial output. Choose from multiple sizes & input ranges to adapt to a variety of special project requirements. The helpful split-core design is easy to install and does not require disconnection of cables or wires.

### Features

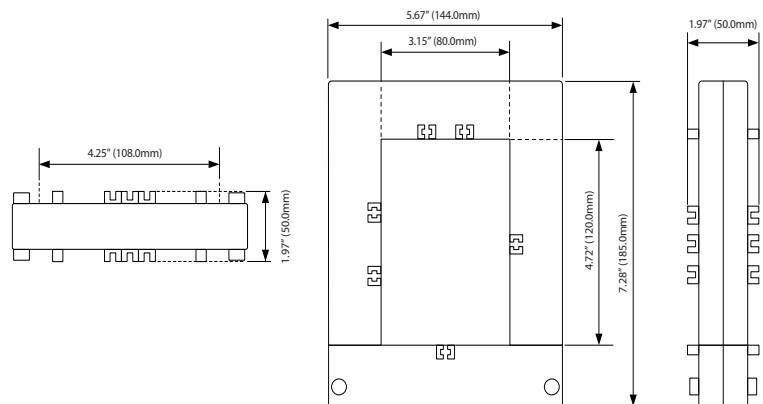
- Revenue grade accuracy: IEC 61869-2 Class 0.5 (from 5% - 120% of rated current)
- Choose from 1A or 5A industrial standard output
- Split-core design streamlines installation
- Included accessories provide multiple mounting options
- UL Recognized



### Specifications

<b>RATED CURRENT</b>	
Current Range	1000A, 1200A, 1600A
Output	5%, 120% of Rated Current
Output	5A, 1A
Accuracy	IEC 61869-2 Class 0.5
<b>MECHANICAL/ENVIRONMENTAL</b>	
Form Factor	Split-Core CT
Window Size	80.0mm x 120.0mm (3.15" x 4.72")
Exterior Dimensions	144.0mm x 185.0mm x 50.0mm 5.67" x 7.28" x 1.97"
Case Material	UL 94V-0 Rated Flame Retardant
Lead Wires	1000mm (3.28ft), 16AWG UL 1015 Twisted Pair
Operating Temperature	-15°C to 60°C / 5°F to 140°F
Operating Humidity	Non-Condensing, 0 to 95% RH
Installation Conditions	Indoor Use
<b>ELECTRICAL</b>	
Wire Polarity	White=Positive, Black=Negative
Phase Orientation	Arrow Points Towards Load
Frequency Range	50 - 400Hz
Burden	5A
<b>SAFETY/COMPLIANCE</b>	
Withstand Voltage	3.0kV / 1mA / 1min
Rated Voltage	600VAC
Certifications	CE, RoHS, cURus (E359521), IEC 61869-2

### Dimensions



## Typical Parameter

MODEL	CURRENT RATIO	ACCURACY CLASS	BURDEN/ RESISTANCE	LEAD LENGTH
AcuCT-3147-1000: 1A	1000/ 1A	IEC 61869-2 Class 0.5	5A	1m
AcuCT-3147-1200: 1A	1200/ 1A	IEC 61869-2 Class 0.5	5A	1m
AcuCT-3147-1600: 1A	1600/ 1A	IEC 61869-2 Class 0.5	5A	1m
AcuCT-3147-1000: 5A	1000/ 5A	IEC 61869-2 Class 0.5	5A	1m
AcuCT-3147-1200: 5A	1200/ 5A	IEC 61869-2 Class 0.5	5A	1m
AcuCT-3147-1600: 5A	1600/ 5A	IEC 61869-2 Class 0.5	5A	1m

## Ordering Information

<i>Model</i>	-	<i>Rated Input</i>	:	<i>Rated Output</i>
AcuCT-3147		1000: 1000A		5: 5A
		1200: 1200A		1: 1A
		1600: 1600A		

### Ordering Example

**AcuCT-3147 - 1600 : 5A**



### Accuenergy Inc.

Los Angeles - Toronto - Pretoria  
 North America Toll Free: 1-877-721-8908  
 Web: [www.accuenergy.com](http://www.accuenergy.com)  
 Email: [marketing@accuenergy.com](mailto:marketing@accuenergy.com)

Revision Date: March 2026 Version: 1.0.4  
 Specs Subject To Change Without Notice.

# AcuCT 5A Series

## AcuCT-3163

5A Split-Core Current Transformer Datasheet



The AcuCT 5A Series is a rugged, compact split-core current transformer designed with either 1A or 5A industrial output. Choose from multiple sizes & input ranges to adapt to a variety of special project requirements. The helpful split-core design is easy to install and does not require disconnection of cables or wires.

### Features

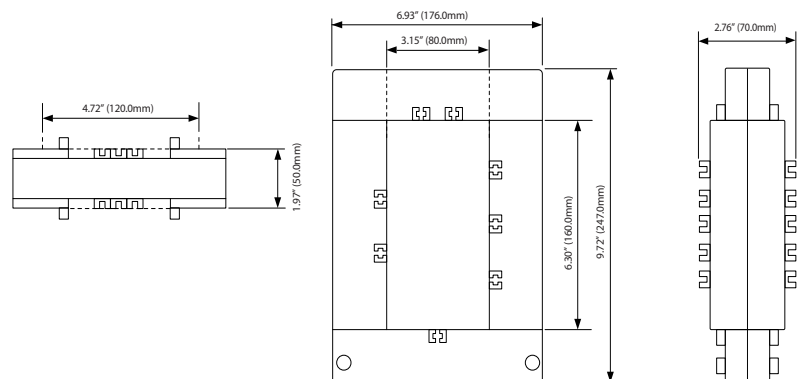
- Revenue grade accuracy: IEC 61869-2 Class 0.5 (from 5% - 120% of rated current)
- Choose from 1A or 5A industrial standard output
- Split-core design streamlines installation
- Included accessories provide multiple mounting options
- UL Recognized



### Specifications

<b>RATED CURRENT</b>	
Current Range	2000A, 2500A, 3000A, 4000A, 5000A
Output	5% - 120% of Rated Current
Accuracy	5A, 1A
	IEC 61869-2 Class 0.5
<b>MECHANICAL/ENVIRONMENTAL</b>	
Form Factor	Split-Core CT
Window Size	80.0mm x 160.0mm (3.15" x 6.30")
Exterior Dimensions	176.0mm x 247.0mm x 70.0mm 6.93" x 9.72" x 2.76"
Case Material	UL 94V-0 Rated Flame Retardant
Lead Wires	1000mm (3.28ft), 16AWG UL 1015 Twisted Pair
Operating Temperature	-15°C to 60°C / 5°F to 140°F
Operating Humidity	Non-Condensing, 0 to 95% RH
Installation Conditions	Indoor Use
<b>ELECTRICAL</b>	
Wire Polarity	White=Positive, Black=Negative
Phase Orientation	Arrow Points Towards Load
Frequency Range	50 - 400Hz
Burden	10VA
<b>SAFETY/COMPLIANCE</b>	
Withstand Voltage	3.0KV / 1mA / 1min
Rated Voltage	600VAC
Certifications	CE, RoHS, cURus (E359521), IEC 61869-2

### Dimensions



## Typical Parameter

MODEL	CURRENT RATIO	ACCURACY CLASS	BURDEN/ RESISTANCE	LEAD LENGTH
AcuCT-3163-2000: 1A	2000/1A	IEC 61869-2 Class 0.5	10VA	1m
AcuCT-3163-2500: 1A	2500/1A	IEC 61869-2 Class 0.5	10VA	1m
AcuCT-3163-3000: 1A	3000/1A	IEC 61869-2 Class 0.5	10VA	1m
AcuCT-3163-4000: 1A	4000/1A	IEC 61869-2 Class 0.5	10VA	1m
AcuCT-3163-5000: 1A	5000/1A	IEC 61869-2 Class 0.5	10VA	1m
AcuCT-3163-2000: 5A	2000/5A	IEC 61869-2 Class 0.5	10VA	1m
AcuCT-3163-2500: 5A	2500/5A	IEC 61869-2 Class 0.5	10VA	1m
AcuCT-3163-3000: 5A	3000/5A	IEC 61869-2 Class 0.5	10VA	1m
AcuCT-3163-4000: 5A	4000/5A	IEC 61869-2 Class 0.5	10VA	1m
AcuCT-3163-5000: 5A	5000/5A	IEC 61869-2 Class 0.5	10VA	1m

## Ordering Information

<i>Model</i>	-	<i>Rated Input</i>	:	<i>Rated Output</i>
AcuCT-3163		2000: 2000A		5: 5A
		2500: 2500A		1: 1A
		3000: 3000A		
		4000: 4000A		
		5000: 5000A		

### Ordering Example

**AcuCT-3163 - 2500 : 5A**



### Accuenergy Inc.

Los Angeles - Toronto - Pretoria  
 North America Toll Free: 1-877-721-8908  
 Web: [www.accuenergy.com](http://www.accuenergy.com)  
 Email: [marketing@accuenergy.com](mailto:marketing@accuenergy.com)

Revision Date: March 2026 Version: 1.0.4  
 Specs Subject To Change Without Notice.