

ACCUENERGY

AcuCT S Series

Solid-Core Current Transformers



D A T A S H E E T

AcuCT-S77 Series

Revenue Grade Solid-Core Current Transformer Datasheet



The solid-core AcuCT S77 current transformer features industry-leading 0.15% accuracy and is Measurement Canada approved. An essential tool in revenue or billing applications, the S77 can be paired with high-accuracy power and energy meters to deliver best-in-class signal transformation and precision measurements. The solid-core form factor is resilient against dust or debris and is ideal for challenging installation sites.

Features

- Accuracy class: 0.15%
- Two current input options: 100A or 200A
- Two rated output options: 80mA or 100mA
- Rugged Solid-Core design for high-performance in harsh environments
- Measurement Canada Approved
- UL2808 Listed, 61010-1, & CSA 22.2



Accuenergy Inc.

Los Angeles - Toronto - Pretoria
 North America Toll Free: 1-877-721-8908
 Web: www.accuenergy.com
 Email: marketing@accuenergy.com

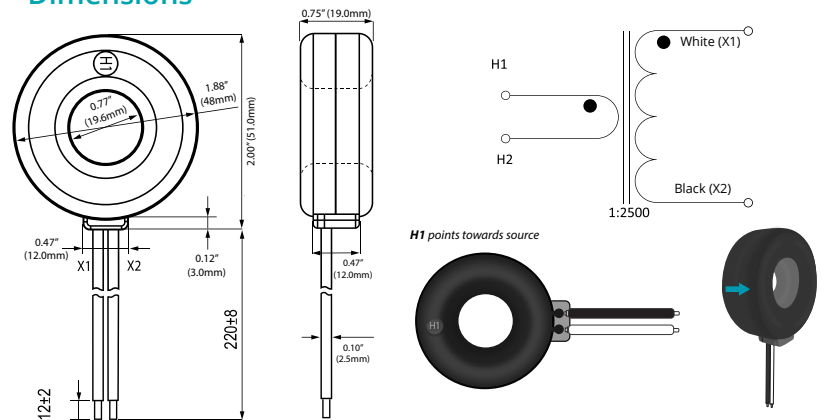
Revision Date: February 2024 Version: 1.0.8
 Specs Subject To Change Without Notice.



Specifications

RATED CURRENT	100A, 200A
Current Range	10%-120% of rated current
Output	80mA, 100mA
Ratio Error	5% rated current: 0.997-1.003; 100% rated current: 0.9985-1.0015
Phase Error	≤ 8'
Accuracy	0.15%
MECHANICAL/ENVIRONMENTAL	
Form Factor	Solid-Core CT
Window Size	Ø 19.6mm (0.77")
Exterior Dimensions	51.0mm x 19.0mm 2.00" x 0.75"
Case Material	UL 94V-0 rated flame retardant
Lead Wires	305mm (1ft), 18AWG UL 1015
Operating Temperature	-25°C to 80°C / -13°F to 176°F
Operating Humidity	Non-Condensing, 5 to 95% RH
Installation Conditions	Indoor Use
ELECTRICAL	
Wire Polarity	White=Positive, Black=Negative
Phase Orientation	H1 points towards source
Frequency Range	50/60Hz
Burden	B0.05/0.125VA
Withstand Voltage	3.0KV/1mA/1min
Impulse Insulation (BIL)	10kV
Insulation Resistance	50MΩ
SAFETY/COMPLIANCE	
Rated Voltage	600VAC, Rated CAT III
Certifications	CE, RoHS, UL Listed UL2808 (E469633) 61010-1, CSA 22.2
Measurement Canada Approved	0.15 class

Dimensions



Ordering Information

	Model	Rated Input	Rated Output
Ordering Number		-	:
Ordering Example	AcuCT-S77	- 100	: 100mA
		100:100A	80mA
		200: 200A	100mA

AcuCT-S113 Series

5A Solid-Core Current Transformer Datasheet



The superior choice for product integrations, the solid-core AcuCT S113 features five output options in a compact, durable form factor. UL2808 Listed for safety, this cost effective current transformer will provide accurate, dependable measurements across industrial, commercial, or in general energy monitoring applications.

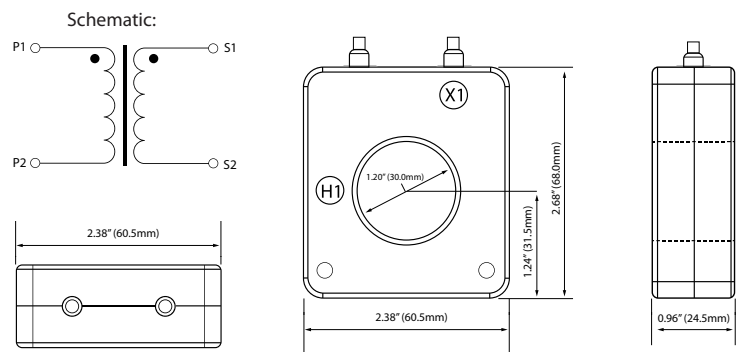
Features

- Accuracy class: IEC 61869-2 Class 0.2
- Three current input options: 200A, 300A, or 400A
- Choose from five output options: 5A, 1A, 100mA, 80mA, 333mV
- Solid-Core design provides reliable performance in challenging applications
- UL2808 Listed

Specifications

RATED CURRENT	
Current Range	5-120% of Rated Current RMS
Output	5A, 1A, 100mA, 80mA, 333mV
Accuracy	IEC 61869-2 Class 0.2
MECHANICAL/ENVIRONMENTAL	
Form Factor	Solid-Core CT
Window Size	30.0mm (1.20")
Exterior Dimensions	60.5mm x 68.0mm x 24.5mm 2.38" x 2.68" x 0.96"
Case Material	UL 94V-0
Lead Wire	2.5m (8.2ft), 18AWG UL1015
Weight	177.00g (6.24oz)
Operating Temperature	-25°C to 70°C / -13°F to 158°F
Storage Temperature	-40°C to 80°C / -40°F to 176°F
Operating Humidity	<90% RH
Installation Conditions	Indoor Use
ELECTRICAL	
Wire Polarity	White=Positive, Black=Negative
Phase Orientation	H1 Points Towards Source
Frequency Range	50/60Hz
Burden	10Ω @mA Output, 1.5VA@1A, 2.5VA@5A
RF	1.2 In
Insulation Resistance	500V/100MΩ Min
SAFETY/COMPLIANCE	
Rated Voltage	600VAC, Rated CAT III
Certifications	CE, RoHS, UL Listed UL2808 (E469633)

Dimensions



Typical Parameter

MODEL	CURRENT RATIO	ACCURACY CLASS	BURDEN/RESISTANCE	LEAD LENGTH
AcuCT-S113-200: 80mA	200/80mA	0.2	10Ω	2.5m
AcuCT-S113-300: 80mA	300/80mA	0.2	10Ω	2.5m
AcuCT-S113-400: 80mA	400/80mA	0.2	10Ω	2.5m
AcuCT-S113-200: 100mA	200/100mA	0.2	10Ω	2.5m
AcuCT-S113-300: 100mA	300/100mA	0.2	10Ω	2.5m
AcuCT-S113-400: 100mA	400/100mA	0.2	10Ω	2.5m
AcuCT-S113-200: 333mV	200/333mV	0.2		2.5m
AcuCT-S113-300: 333mV	300/333mV	0.2		2.5m
AcuCT-S113-400: 333mV	400/333mV	0.2		2.5m
AcuCT-S113-200: 1A	200/1A	0.5	1.5VA	2.5m
AcuCT-S113-300: 1A	300/1A	0.5	1.5VA	2.5m
AcuCT-S113-400: 1A	400/1A	0.5	1.5VA	2.5m
AcuCT-S113-200: 5A	200/5A	1	2.5VA	2.5m
AcuCT-S113-300: 5A	300/5A	1	2.5VA	2.5m
AcuCT-S113-400: 5A	400/5A	1	2.5VA	2.5m

Ordering Information

<i>Model</i>	-	<i>Rated Input</i>	:	<i>Rated Output</i>
AcuCT-S113		200: 200A		333mV
		300: 300A		80mA
		400: 400A		100mA
				1A
				5A

Ordering Example

AcuCT-S113

200

:

333mV



Accuenergy Inc.

Los Angeles - Toronto - Pretoria

North America Toll Free: 1-877-721-8908

Web: www.accuenergy.com

Email: marketing@accuenergy.com

Revision Date: March 2026 Version: 1.0.6

Specs Subject To Change Without Notice.

AcuCT S125 Series

Solid-Core Current Transformer Datasheet



Built with epoxy encapsulated housing for superior integrity and protection, the AcuCT S125 solid-core current transformer delivers 0.2% measurement accuracy, ideal for revenue-grade billing applications when paired with high precision energy meters. Available in a wide range of rated current options from 50A to 400A, it is suitable for a wide range of applications across commercial and industrial sectors.

Features

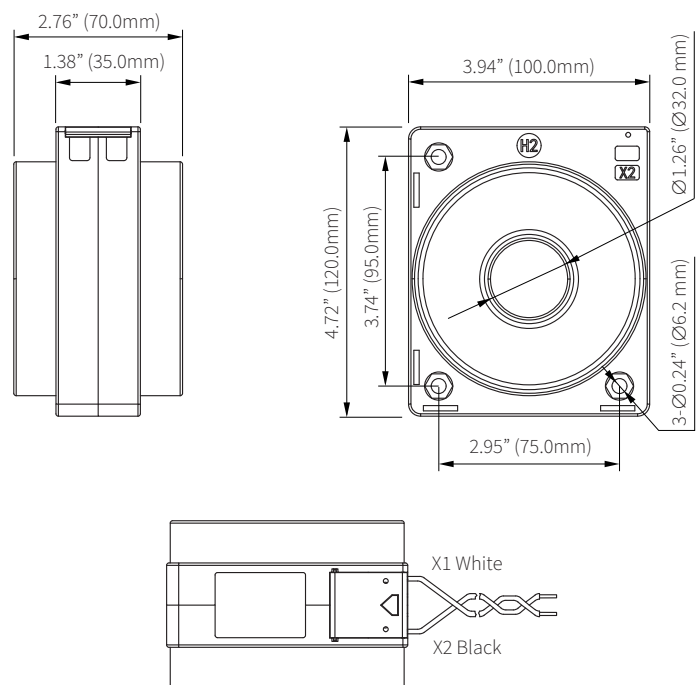
- Accuracy class: 0.2
- Current Inputs: 50A, 100A, 200A, 300A, 400A
- Output Options: 5A, 1A, 80mA, 100mA, 333mV



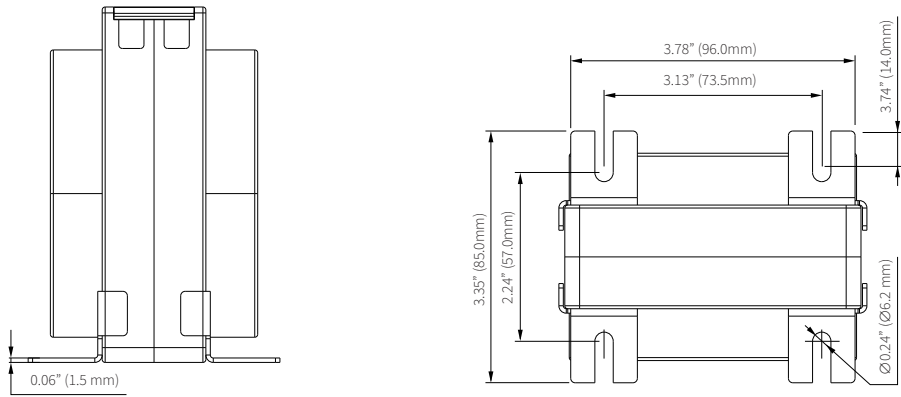
Specifications

RATED CURRENT	
Rated Current	50A, 100A, 200A, 300A, 400A
Current Range	5%-120% of Rated Current
Output	5A, 1A, 80mA, 100mA, 333mV
Accuracy	IEC 61869-2 Class 0.2
MECHANICAL/ENVIRONMENTAL	
Exterior Dimensions	120mm x 100mm x 70mm 4.72" x 3.94" x 2.76"
Window Size	Ø 32.0mm (1.26")
Case Material	Epoxy Encapsulated Housing
Operating Temperature	-25°C to 70°C / -13°F to 158°F
Storage Temperature	-40°C to 80°C / -40°F to 176°F
Operating Humidity	<90% RH
Lead Wires	2.5m (8ft) Twisted Pair, 18AWG
Installation Conditions	Indoor Use
ELECTRICAL	
Wire Polarity	White=Positive, Black=Negative
Phase Orientation	H1 Points Towards Source
Frequency Range	50/60Hz
Burden	80,100mA: 10Ω / 1A: 1.5VA / 5A: 2.5VA
Insulation Resistance	500V/100MΩ Min
SAFETY/COMPLIANCE	
Rated Voltage	600VAC, Rated CAT IV
Certifications	CE, RoHS, UL Listed UL2808

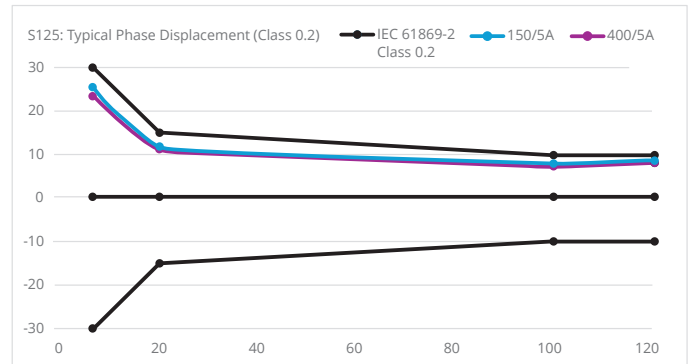
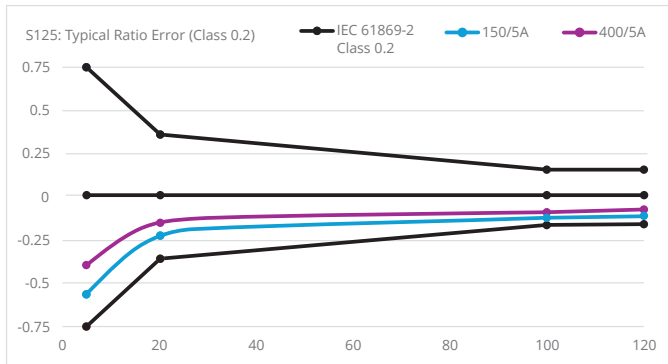
Dimensions



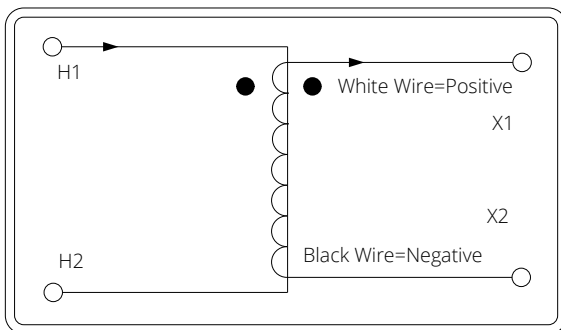
Mounting Dimension



Accuracy Class 0.2



Installation Instructions



Typical Parameter

MODEL	CURRENT RATIO	ACCURACY CLASS	BURDEN/RESISTANCE	LEAD LENGTH
AcuCT-S125-50: 80mA	50/80mA	0.2	10Ω	2.5m
AcuCT-S125-100: 80mA	100/80mA	0.2	10Ω	2.5m
AcuCT-S125-200: 80mA	200/80mA	0.2	10Ω	2.5m
AcuCT-S125-300: 80mA	300/80mA	0.2	10Ω	2.5m
AcuCT-S125-400: 80mA	400/80mA	0.2	10Ω	2.5m
AcuCT-S125-50: 100mA	50/100mA	0.2	10Ω	2.5m
AcuCT-S125-100: 100mA	100/100mA	0.2	10Ω	2.5m
AcuCT-S125-200: 100mA	200/100mA	0.2	10Ω	2.5m
AcuCT-S125-300: 100mA	300/100mA	0.2	10Ω	2.5m
AcuCT-S125-400: 100mA	400/100mA	0.2	10Ω	2.5m
AcuCT-S125-50: 333mV	50/333mV	0.2		2.5m
AcuCT-S125-100: 333mV	100/333mV	0.2		2.5m
AcuCT-S125-200: 333mV	200/333mV	0.2		2.5m
AcuCT-S125-300: 333mV	300/333mV	0.2		2.5m
AcuCT-S125-400: 333mV	400/333mV	0.2		2.5m
AcuCT-S125-50: 1A	50/1A	0.2	1.5VA	2.5m
AcuCT-S125-100: 1A	100/1A	0.2	1.5VA	2.5m
AcuCT-S125-200: 1A	200/1A	0.2	1.5VA	2.5m
AcuCT-S125-300: 1A	300/1A	0.2	1.5VA	2.5m
AcuCT-S125-400: 1A	400/1A	0.2	1.5VA	2.5m
AcuCT-S125-50: 5A	50/5A	0.2	2.5VA	2.5m
AcuCT-S125-100: 5A	100/5A	0.2	2.5VA	2.5m
AcuCT-S125-200: 5A	200/5A	0.2	2.5VA	2.5m
AcuCT-S125-300: 5A	300/5A	0.2	2.5VA	2.5m
AcuCT-S125-400: 5A	400/5A	0.2	2.5VA	2.5m

Note: In addition to the recommended accuracy classes listed above, custom accuracy class configurations are also available (e.g., 0.5, 0.5S, 0.2S).



Accuenergy Inc.

Los Angeles - Toronto - Pretoria
 North America Toll Free: 1-877-721-8908
 Web: www.accuenergy.com
 Email: marketing@accuenergy.com

Revision Date: March 2026 Version: 1.0.2
 Specs Subject To Change Without Notice.

Ordering Information

Model	Rated Input	Rated Output
AcuCT-S125	50: 50A	5A
	100: 100A	1A
	200: 200A	100mA
	300: 300A	80mA
	400: 400A	333mV

Ordering Example **AcuCT-S125 - 200 : 333mV**

AcuCT S165 Series

Solid-Core Current Transformer Datasheet



The AcuCT S165 solid-core current transformer delivers up to IEC 61869-2 Class 0.2 measurement accuracy at 5% to 120% rated current making it ideal for revenue-grade billing and load management solutions when paired with high-precision energy meters. Available in a wide range of rated current input options, from 100A to 1200A, as well as current output options, covering a wide range of applications across both commercial and industrial sectors.

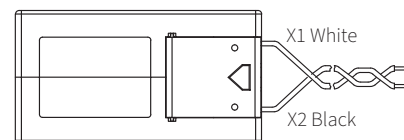
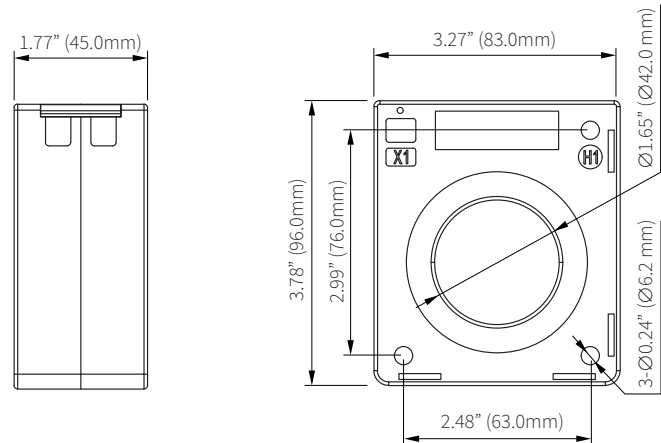
Features

- Accuracy class: 0.2
- Current Input Options: 100A, 200A, 300A, 400A, 500A, 600A, 800A, 1000A, 1200A
- Current Output Options: 5A, 1A, 100mA, 80mA, 333mV

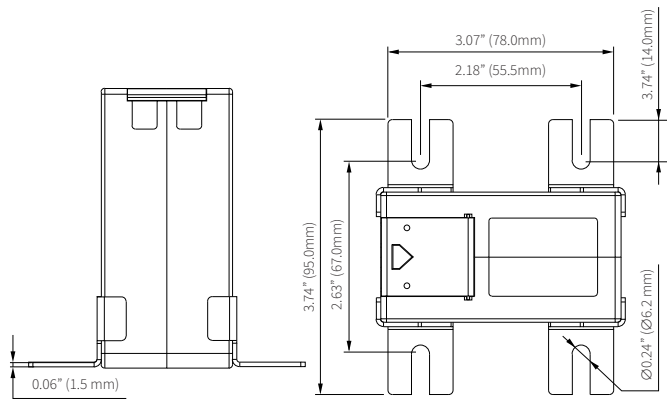
Specifications

RATED CURRENT	100A, 200A, 300A, 400A, 500A, 600A, 800A, 1000A, 1200A
Current Range	5%-120% of Rated Current
Output	5A, 1A, 100mA, 80mA, 333mV
Accuracy	IEC 61869-2 Class 0.2
MECHANICAL/ENVIRONMENTAL	
Exterior Dimensions	83mm x 96mm x 45mm 3.27" x 3.78" x 1.77"
Window Size	Ø 42.0mm (1.65")
Case Material	Epoxy Encapsulated Housing
Operating Temperature	-25°C to 70°C / -13°F to 158°F
Storage Temperature	-40°C to 80°C / -40°F to 176°F
Operating Humidity	Non-Condensing, 5% to 95% RH
Lead Wires	2.5m (8ft) Twisted Pair, 18AWG
Installation Conditions	Indoor Use
ELECTRICAL	
Wire Polarity	White=Positive, Black=Negative
Phase Orientation	H1 Points Towards Source
Frequency Range	50/60Hz
Burden	1.5-5VA@1/5A; 10Ω@mA
Insulation Resistance	500V / 100MΩ Min
Rated Voltage	600VAC, Rated CAT IV
SAFETY/COMPLIANCE	
Certifications	CE, RoHS, UL Listed UL 2808

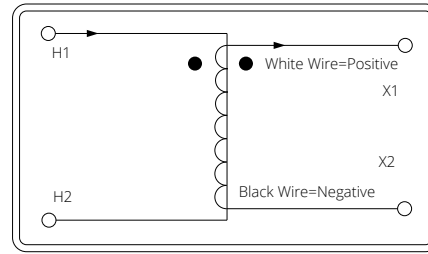
Dimensions



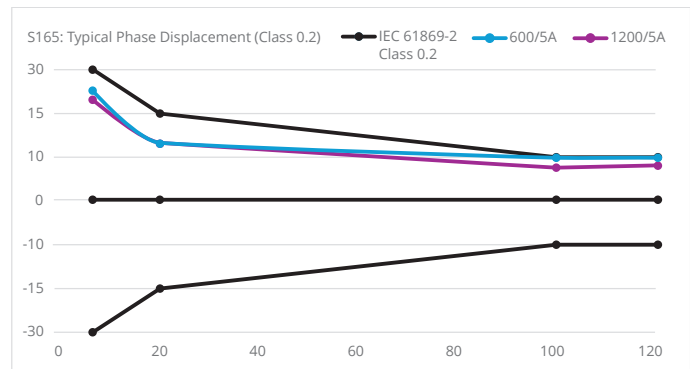
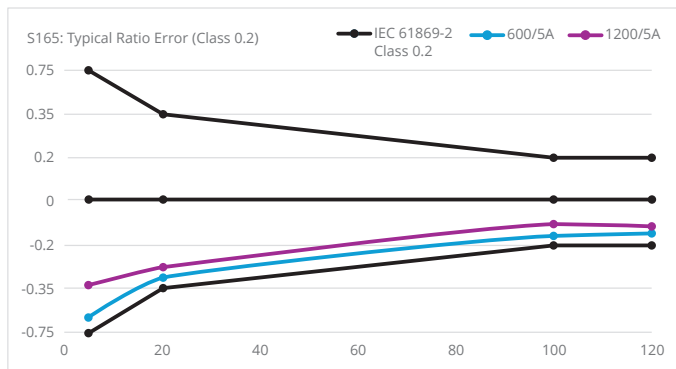
Mounting Dimension



Installation Instructions



IEC 61869-2 0.2 Compliance



Typical Parameter

MODEL	CURRENT RATIO	ACCURACY CLASS	BURDEN/RESISTANCE	LEAD LENGTH
AcuCT-S165-100: 80mA	100/80mA	0.2	10Ω	2.5m
AcuCT-S165-200: 80mA	200/80mA	0.2	10Ω	2.5m
AcuCT-S165-300: 80mA	300/80mA	0.2	10Ω	2.5m
AcuCT-S165-400: 80mA	400/80mA	0.2	10Ω	2.5m
AcuCT-S165-500: 80mA	500/80mA	0.2	10Ω	2.5m
AcuCT-S165-600: 80mA	600/80mA	0.2	10Ω	2.5m
AcuCT-S165-800: 80mA	800/80mA	0.2	10Ω	2.5m
AcuCT-S165-1000: 80mA	1000/80mA	0.2	10Ω	2.5m
AcuCT-S165-1200: 80mA	1200/80mA	0.2	10Ω	2.5m
AcuCT-S165-100: 100mA	100/100mA	0.2	10Ω	2.5m
AcuCT-S165-200: 100mA	200/100mA	0.2	10Ω	2.5m
AcuCT-S165-300: 100mA	300/100mA	0.2	10Ω	2.5m
AcuCT-S165-400: 100mA	400/100mA	0.2	10Ω	2.5m
AcuCT-S165-500: 100mA	500/100mA	0.2	10Ω	2.5m
AcuCT-S165-600: 100mA	600/100mA	0.2	10Ω	2.5m
AcuCT-S165-800: 100mA	800/100mA	0.2	10Ω	2.5m
AcuCT-S165-1000: 100mA	1000/100mA	0.2	10Ω	2.5m

AcuCT-S165-1200: 100mA	1200/100mA	0.2	10Ω	2.5m
AcuCT-S165-100: 333mV	100/333mV	0.2		2.5m
AcuCT-S165-200: 333mV	200/333mV	0.2		2.5m
AcuCT-S165-300: 333mV	300/333mV	0.2		2.5m
AcuCT-S165-400: 333mV	400/333mV	0.2		2.5m
AcuCT-S165-500: 333mV	500/333mV	0.2		2.5m
AcuCT-S165-600: 333mV	600/333mV	0.2		2.5m
AcuCT-S165-800: 333mV	800/333mV	0.2		2.5m
AcuCT-S165-1000: 333mV	1000/333mV	0.2		2.5m
AcuCT-S165-1200: 333mV	1200/333mV	0.2		2.5m
AcuCT-S165-100: 1A	100/1A	0.2	1.5VA	2.5m
AcuCT-S165-200: 1A	200/1A	0.2	1.5VA	2.5m
AcuCT-S165-300: 1A	300/1A	0.2	1.5VA	2.5m
AcuCT-S165-400: 1A	400/1A	0.2	1.5VA	2.5m
AcuCT-S165-500: 1A	500/1A	0.2	2.5VA	2.5m
AcuCT-S165-600: 1A	600/1A	0.2	2.5VA	2.5m
AcuCT-S165-800: 1A	800/1A	0.2	3.75VA	2.5m
AcuCT-S165-1000: 1A	1000/1A	0.2	5VA	2.5m
AcuCT-S165-1200: 1A	1200/1A	0.2	5VA	2.5m
AcuCT-S165-100: 5A	100/5A	0.2	2.5VA	2.5m
AcuCT-S165-200: 5A	200/5A	0.2	2.5VA	2.5m
AcuCT-S165-300: 5A	300/5A	0.2	2.5VA	2.5m
AcuCT-S165-400: 5A	400/5A	0.2	2.5VA	2.5m
AcuCT-S165-500: 5A	500/5A	0.2	2.5VA	2.5m
AcuCT-S165-600: 5A	600/5A	0.2	2.5VA	2.5m
AcuCT-S165-800: 5A	800/5A	0.2	3.75VA	2.5m
AcuCT-S165-1000: 5A	1000/5A	0.2	5VA	2.5m
AcuCT-S165-1200: 5A	1200/5A	0.2	5VA	2.5m

Note: In addition to the recommended accuracy classes listed above, custom accuracy class configurations are also available (e.g., 0.5, 0.5S, 0.2S).

Ordering Information

Model	Rated Input	Rated Output
AcuCT-S165	100: 100A	5A
	200: 200A	1A
	300: 300A	100mA
	400: 400A	80mA
	500: 500A	333mV
	600: 600A	
	800: 800A	
	1000: 1000A	
	1200: 1200A	

Ordering Example AcuCT-S165 - 800 : 333mV



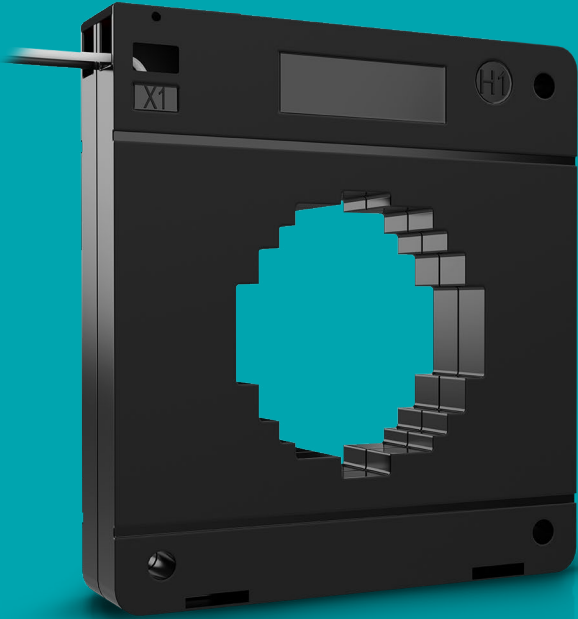
Accuenergy Inc.

Los Angeles - Toronto - Pretoria
 North America Toll Free: 1-877-721-8908
 Web: www.accuenergy.com
 Email: marketing@accuenergy.com

Revision Date: March 2026 Version: 1.0.2
 Specs Subject To Change Without Notice.

AcuCT-S220 Series

Switchgear Solid-Core Current Transformer



High precision solid-core current transformer for permanent installations. The AcuCT S220 features multiple input and output options in a small compact form factor. It provides consistent, reliable measurements across industrial and commercial for general metering or switchgear applications.

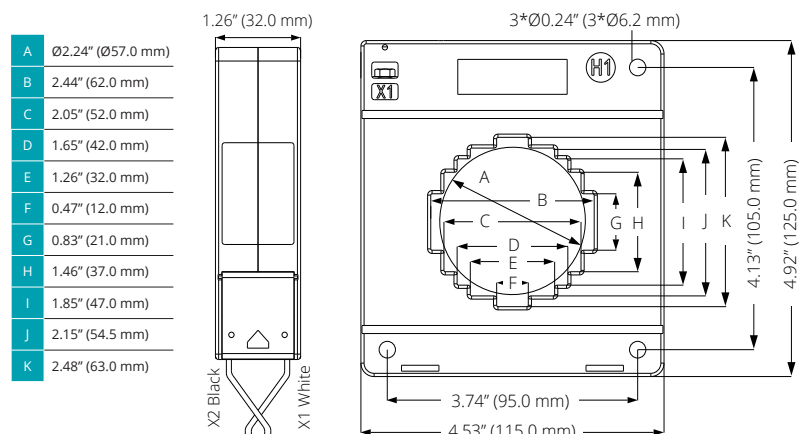
Features

- Accuracy class: 0.2
- Current input options: 200A, 250A, 300A, 500A, 600A, 800A, 1000A, 1200A, 1500A
- Choose from five output options: 5A, 1A, 100mA, 80mA, 333mV

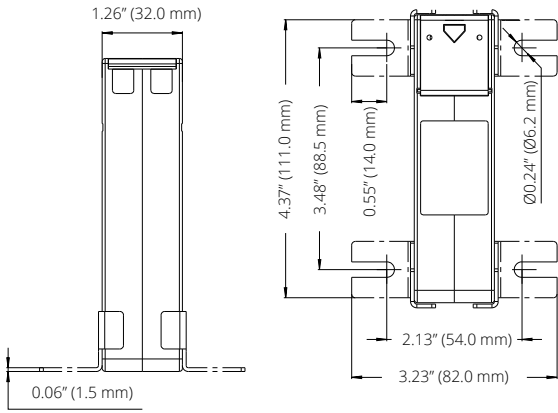
Specifications

RATED CURRENT	200A, 250A, 300A, 500A, 600A, 800A, 1000A, 1200A, 1500A
Current Range	5%-120% of Rated Current
Output	5A, 1A, 100mA, 80mA, 333mV
Accuracy	IEC 61869-2 Class 0.2
MECHANICAL/ENVIRONMENTAL	
Form Factor	Solid-Core CT
Window Size	Ø 57.0 mm (2.24")
Exterior Dimensions	115.0mm x 125.0mm x 32.0mm 4.53" x 4.92" x 1.26"
Case Material	Epoxy Encapsulated Housing
Lead Wires	2.5m (8ft), Twisted Pair, 18AWG
Operating Temperature	-25°C to 70°C / -13°F to 158°F
Storage Temperature	-40°C to 80°C / -40°F to 176°F
Operating Humidity	<90% RH
Installation Conditions	Indoor Use
ELECTRICAL	
Wire Polarity	White=Positive, Black=Negative
Phase Orientation	H1 Points Towards Source
Frequency Range	50-60Hz
Burden	2.5-5VA @1A, 5A and 10Ω@mA Output
Withstand Voltage	3,000VAC
Insulation Resistance	500V/100MΩ Min
SAFETY/COMPLIANCE	
Rated Voltage	600VAC, Rated CAT III
Certifications	CE, RoHS, UL Listed UL 2808, CSA 22.2

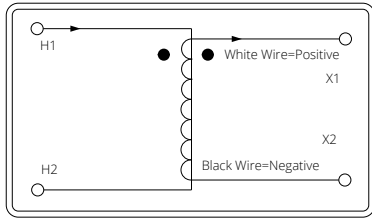
Dimensions



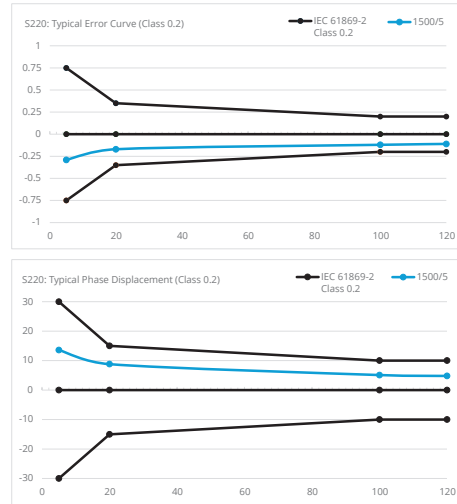
Mounting Dimension



Installation Instructions



Accuracy Class 0.2



Typical Parameter

MODEL	CURRENT RATIO	ACCURACY	BURDEN / RESISTANCE	LEAD LENGTH
AcuCT-S220-200: 5A	200/5A	0.2	2.5VA	2.5m
AcuCT-S220-250: 5A	250/5A	0.2	2.5VA	2.5m
AcuCT-S220-300: 5A	300/5A	0.2	2.5VA	2.5m
AcuCT-S220-500: 5A	500/5A	0.2	2.5VA	2.5m
AcuCT-S220-600: 5A	600/5A	0.2	2.5VA	2.5m
AcuCT-S220-800: 5A	800/5A	0.2	3.75VA	2.5m
AcuCT-S220-1000: 5A	1000/5A	0.2	5VA	2.5m
AcuCT-S220-1200: 5A	1200/5A	0.2	5VA	2.5m
AcuCT-S220-1500: 5A	1500/5A	0.2	5VA	2.5m
AcuCT-S220-200: 1A	200/1A	0.2	2.5VA	2.5m
AcuCT-S220-250: 1A	250/1A	0.2	2.5VA	2.5m
AcuCT-S220-300: 1A	300/1A	0.2	2.5VA	2.5m
AcuCT-S220-500: 1A	500/1A	0.2	2.5VA	2.5m
AcuCT-S220-600: 1A	600/1A	0.2	2.5VA	2.5m
AcuCT-S220-800: 1A	800/1A	0.2	3.75VA	2.5m
AcuCT-S220-1000: 1A	1000/1A	0.2	5VA	2.5m
AcuCT-S220-1200: 1A	1200/1A	0.2	5VA	2.5m
AcuCT-S220-1500: 1A	1500/1A	0.2	5VA	2.5m
AcuCT-S220-200: 100mA	200/100mA	0.2	10Ω	2.5m
AcuCT-S220-250: 100mA	250/100mA	0.2	10Ω	2.5m
AcuCT-S220-300: 100mA	300/100mA	0.2	10Ω	2.5m
AcuCT-S220-500: 100mA	500/100mA	0.2	10Ω	2.5m
AcuCT-S220-600: 100mA	600/100mA	0.2	10Ω	2.5m
AcuCT-S220-800: 100mA	800/100mA	0.2	10Ω	2.5m
AcuCT-S220-1000: 100mA	1000/100mA	0.2	10Ω	2.5m
AcuCT-S220-1200: 100mA	1200/100mA	0.2	10Ω	2.5m
AcuCT-S220-1500: 100mA	1500/100mA	0.2	10Ω	2.5m

AcuCT-S220-200: 80mA	200/80mA	0.2	10Ω	2.5m
AcuCT-S220-250: 80mA	250/80mA	0.2	10Ω	2.5m
AcuCT-S220-300: 80mA	300/80mA	0.2	10Ω	2.5m
AcuCT-S220-500: 80mA	500/80mA	0.2	10Ω	2.5m
AcuCT-S220-600: 80mA	600/80mA	0.2	10Ω	2.5m
AcuCT-S220-800: 80mA	800/80mA	0.2	10Ω	2.5m
AcuCT-S220-1000: 80mA	1000/80mA	0.2	10Ω	2.5m
AcuCT-S220-1200: 80mA	1200/80mA	0.2	10Ω	2.5m
AcuCT-S220-1500: 80mA	1500/80mA	0.2	10Ω	2.5m
AcuCT-S220-200: 333mV	200/333mV	0.2		2.5m
AcuCT-S220-250: 333mV	250/333mV	0.2		2.5m
AcuCT-S220-300: 333mV	300/333mV	0.2		2.5m
AcuCT-S220-500: 333mV	500/333mV	0.2		2.5m
AcuCT-S220-600: 333mV	600/333mV	0.2		2.5m
AcuCT-S220-800: 333mV	800/333mV	0.2		2.5m
AcuCT-S220-1000: 333mV	1000/333mV	0.2		2.5m
AcuCT-S220-1200: 333mV	1200/333mV	0.2		2.5m
AcuCT-S220-1500: 333mV	1500/333mV	0.2		2.5m

The values in the table are the additional burden values containing 2.5 meters leads.

Ordering Information

Model	-	Rated Input	:	Rated Output
AcuCT-S220		200: 200A		5A
		250: 250A		1A
		300: 300A		100mA
		500: 500A		80mA
		600: 600A		333mV
		800: 800A		
		1000: 1000A		
		1200: 1200A		
		1500: 1500A		

Ordering Example AcuCT-S220 500 : 333mV

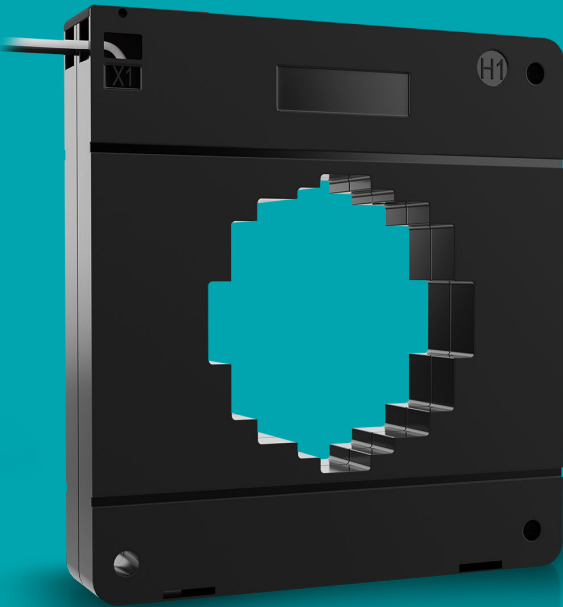


Accuenergy Inc.
 Los Angeles - Toronto - Pretoria
 North America Toll Free: 1-877-721-8908
 Web: www.accuenergy.com
 Email: marketing@accuenergy.com

Revision Date: March 2026 Version: 1.0.6
 Specs Subject To Change Without Notice.

AcuCT-S335 Series

Busbar Solid-Core Current Transformer



Ideal for mounting to a busbar or a cable, the AcuCT S335 is a solid-core current transformer for permanent installations. Features multiple input and output options in a compact form factor. It provides consistent, reliable measurements across industrial and commercial for general metering applications.

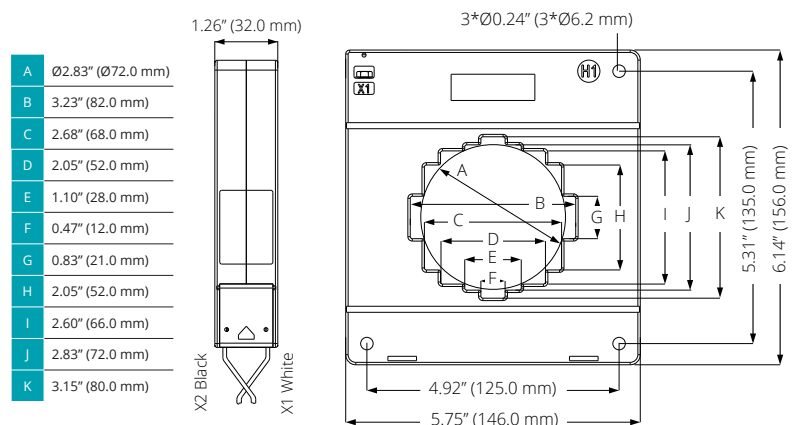
Features

- Accuracy class: 0.2
- Current input options: 500A, 600A, 800A, 1000A, 1200A, 1500A, 2000A, 2500A, 3000A, 3500A
- Choose from five output options: 5A, 1A, 100mA, 80mA, 333mV

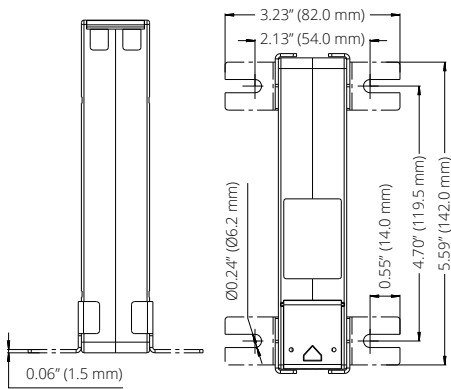
Specifications

RATED CURRENT	500A, 600A, 800A, 1000A, 1200A, 1500A, 2000A, 2500A, 3000A, 3500A
Current Range	5%-120% of Rated Current
Output	5A, 1A, 100mA, 80mA, 333mV
Accuracy	IEC 61869-2 Class 0.2
MECHANICAL/ENVIRONMENTAL	
Form Factor	Solid-Core CT
Window Size	Ø 72mm (2.83")
Exterior Dimensions	146.0mm x 156.0mm x 32.0mm 5.75" x 6.14" x 1.26"
Case Material	Epoxy Encapsulated Housing
Lead Wires	2.5m (8ft), Twisted Pair, 18AWG
Operating Temperature	-25°C to 70°C / -13°F to 158°F
Storage Temperature	-40°C to 80°C / -40°F to 176°F
Operating Humidity	<90% RH
Installation Conditions	Indoor Use
ELECTRICAL	
Wire Polarity	White=Positive, Black=Negative
Phase Orientation	H1 Points Towards Source
Frequency Range	50-60Hz
Burden	2.5-15VA @ 1A, 5A and 10Ω@mA Output
Withstand Voltage	3,000VAC
Insulation Resistance	500V/100MΩ Min
SAFETY/COMPLIANCE	
Rated Voltage	600VAC, Rated CAT III
Certifications	cURus, CE, RoHS, UL Listed UL 2808, CSA 22.2

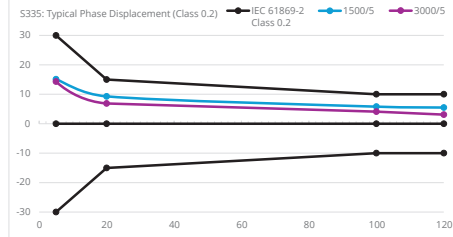
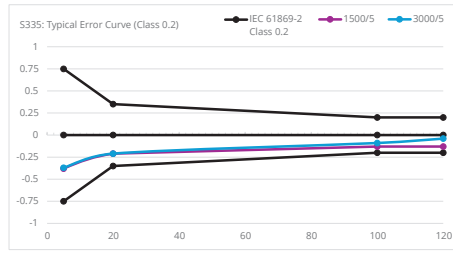
Dimensions



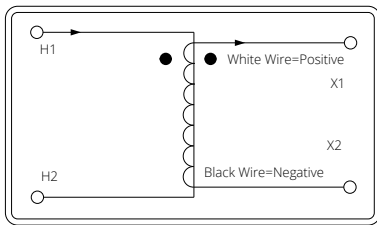
Mounting Dimension



Accuracy Class 0.2



Installation Instructions



Typical Parameter

MODEL	CURRENT RATIO	ACCURACY	BURDEN / RESISTANCE	LEAD LENGTH
AcuCT-S335-500: 80mA	500/80mA	0.2	10Ω	2.5m
AcuCT-S335-600: 80mA	600/80mA	0.2	10Ω	2.5m
AcuCT-S335-800: 80mA	800/80mA	0.2	10Ω	2.5m
AcuCT-S335-1000: 80mA	1000/80mA	0.2	10Ω	2.5m
AcuCT-S335-1200: 80mA	1200/80mA	0.2	10Ω	2.5m
AcuCT-S335-1500: 80mA	1500/80mA	0.2	10Ω	2.5m
AcuCT-S335-2000: 80mA	2000/80mA	0.2	10Ω	2.5m
AcuCT-S335-2500: 80mA	2500/80mA	0.2	10Ω	2.5m
AcuCT-S335-3000: 80mA	3000/80mA	0.2	10Ω	2.5m
AcuCT-S335-3500: 80mA	3500/80mA	0.2	10Ω	2.5m
AcuCT-S335-500: 100mA	500/100mA	0.2	10Ω	2.5m
AcuCT-S335-600: 100mA	600/100mA	0.2	10Ω	2.5m
AcuCT-S335-800: 100mA	800/100mA	0.2	10Ω	2.5m
AcuCT-S335-1000: 100mA	1000/100mA	0.2	10Ω	2.5m
AcuCT-S335-1200: 100mA	1200/100mA	0.2	10Ω	2.5m
AcuCT-S335-1500: 100mA	1500/100mA	0.2	10Ω	2.5m
AcuCT-S335-2000: 100mA	2000/100mA	0.2	10Ω	2.5m
AcuCT-S335-2500: 100mA	2500/100mA	0.2	10Ω	2.5m
AcuCT-S335-3000: 100mA	3000/100mA	0.2	10Ω	2.5m
AcuCT-S335-3500: 100mA	3500/100mA	0.2	10Ω	2.5m
AcuCT-S335-500: 333mV	500/333mV	0.2		2.5m
AcuCT-S335-600: 333mV	600/333mV	0.2		2.5m
AcuCT-S335-800: 333mV	800/333mV	0.2		2.5m
AcuCT-S335-1000: 333mV	1000/333mV	0.2		2.5m
AcuCT-S335-1200: 333mV	1200/333mV	0.2		2.5m
AcuCT-S335-1500: 333mV	1500/333mV	0.2		2.5m

AcuCT-S335-2000: 333mV	2000/333mV	0.2		2.5m
AcuCT-S335-2500: 333mV	2500/333mV	0.2		2.5m
AcuCT-S335-3000: 333mV	3000/333mV	0.2		2.5m
AcuCT-S335-3500: 333mV	3500/333mV	0.2		2.5m
AcuCT-S335-500: 1A	500/1A	0.2	2.5VA	2.5m
AcuCT-S335-600: 1A	600/1A	0.2	2.5VA	2.5m
AcuCT-S335-800: 1A	800/1A	0.2	3.75VA	2.5m
AcuCT-S335-1000: 1A	1000/1A	0.2	5VA	2.5m
AcuCT-S335-1200: 1A	1200/1A	0.2	5VA	2.5m
AcuCT-S335-1500: 1A	1500/1A	0.2	5VA	2.5m
AcuCT-S335-2000: 1A	2000/1A	0.2	7.5VA	2.5m
AcuCT-S335-2500: 1A	2500/1A	0.2	15VA	2.5m
AcuCT-S335-3000: 1A	3000/1A	0.2	15VA	2.5m
AcuCT-S335-3500: 1A	3500/1A	0.2	15VA	2.5m
AcuCT-S335-500: 5A	500/5A	0.2	2.5VA	2.5m
AcuCT-S335-600: 5A	600/5A	0.2	2.5VA	2.5m
AcuCT-S335-800: 5A	800/5A	0.2	3.75VA	2.5m
AcuCT-S335-1000: 5A	1000/5A	0.2	5VA	2.5m
AcuCT-S335-1200: 5A	1200/5A	0.2	5VA	2.5m
AcuCT-S335-1500: 5A	1500/5A	0.2	5VA	2.5m
AcuCT-S335-2000: 5A	2000/5A	0.2	7.5VA	2.5m
AcuCT-S335-2500: 5A	2500/5A	0.2	15VA	2.5m
AcuCT-S335-3000: 5A	3000/5A	0.2	15VA	2.5m
AcuCT-S335-3500: 5A	3500/5A	0.2	15VA	2.5m

The values in the table are the additional burden values containing 2.5 meters leads.

Ordering Information

Model	-	Rated Input	:	Rated Output
AcuCT-S335		500: 500A		5A
		600: 600A		1A
		800: 800A		100mA
		1000: 1000A		80mA
		1200: 1200A		333mV
		1500: 1500A		
		2000: 2000A		
		2500: 2500A		
		3000: 3000A		
		3500: 3500A		



Accuenergy Inc.

Los Angeles - Toronto - Pretoria

North America Toll Free: 1-877-721-8908

Web: www.accuenergy.com

Email: marketing@accuenergy.com

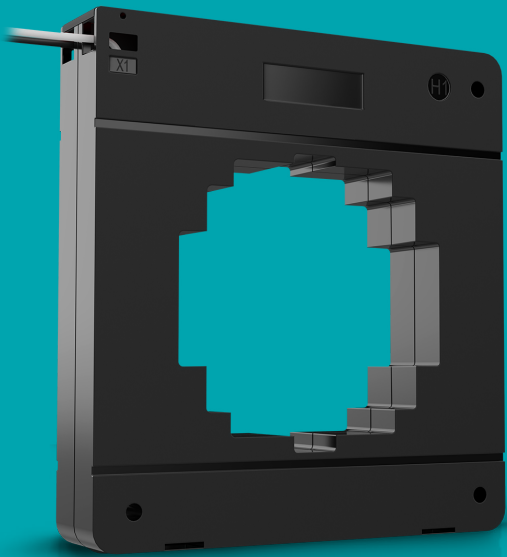
Revision Date: March 2026 Version: 1.0.5

Specs Subject To Change Without Notice.

Ordering Example AcuCT-S335 - 500 : 333mV

AcuCT-S433 Series

Instrument Solid-Core Current Transformer



The AcuCT S433 is used in permanent metering installations with rated outputs for 5A, 1A, 100mA, 80mA, 333mV. It provides consistent, reliable measurements across industrial and commercial for general metering applications.

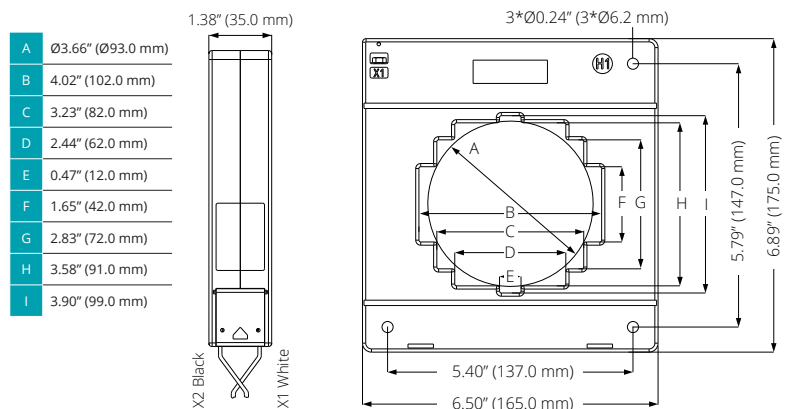
Features

- Accuracy class: 0.2
- Current input options: 800A, 1000A, 1200A, 1500A, 2000A, 2500A, 3000A, 3500A, 4000A
- Choose from five output options: 5A, 1A, 100mA, 80mA, 333mV

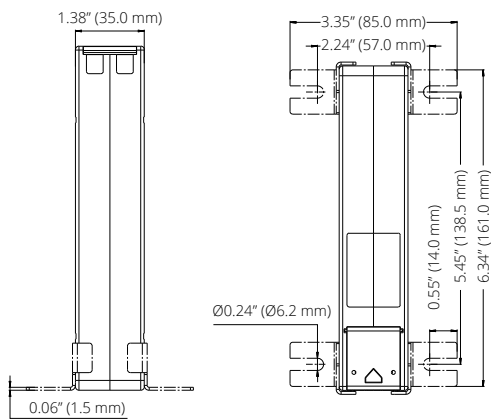
Specifications

RATED CURRENT	800A, 1000A, 1200A, 1500A, 2000A, 2500A, 3000A, 3500A, 4000A
Current Range	5%-120% of Rated Current
Output	5A, 1A, 100mA, 80mA, 333mV
Accuracy	IEC 61869-2 Class 0.2
MECHANICAL/ENVIRONMENTAL	
Form Factor	Solid-Core CT
Window Size	Ø 93.0mm (3.66")
Exterior Dimensions	165.0mm x 175.0mm x 35.0mm 6.50" x 6.89" x 1.38"
Case Material	Epoxy Encapsulated Housing
Lead Wires	2.5m (8ft), Twisted Pair, 18AWG
Operating Temperature	-25°C to 70°C / -13°F to 158°F
Storage Temperature	-40°C to 80°C / -40°F to 176°F
Operating Humidity	<90% RH
Installation Conditions	Indoor Use
ELECTRICAL	
Wire Polarity	White=Positive, Black=Negative
Phase Orientation	H1 Points Towards Source
Frequency Range	50-400Hz
Burden	3.75VA-15VA@1A and 5A, 10Ω@mA Output
Withstand Voltage	3,000VAC
Insulation Resistance	500V/100MΩ Min
SAFETY/COMPLIANCE	
Rated Voltage	600VAC, Rated CAT III
Certifications	cURus, CE, RoHS, UL Listed UL 2808, CSA 22.2

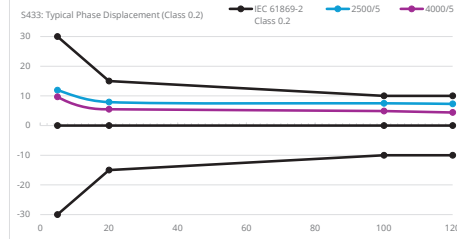
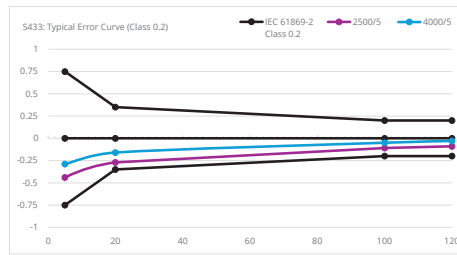
Dimensions



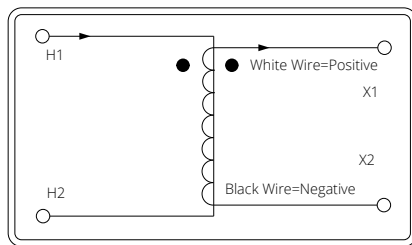
Mounting Dimension



Accuracy Class 0.2



Installation Instructions



Typical Parameter

MODEL	CURRENT RATIO	ACCURACY	BURDEN / RESISTANCE	LEAD LENGTH
AcuCT-S433-800: 5A	800/5A	0.2	3.75VA	2.5m
AcuCT-S433-1000: 5A	1000/5A	0.2	5VA	2.5m
AcuCT-S433-1200: 5A	1200/5A	0.2	5VA	2.5m
AcuCT-S433-1500: 5A	1500/5A	0.2	5VA	2.5m
AcuCT-S433-2000: 5A	2000/5A	0.2	7.5VA	2.5m
AcuCT-S433-2500: 5A	2500/5A	0.2	15VA	2.5m
AcuCT-S433-3000: 5A	3000/5A	0.2	15VA	2.5m
AcuCT-S433-3500: 5A	3500/5A	0.2	15VA	2.5m
AcuCT-S433-4000: 5A	4000/5A	0.2	15VA	2.5m
AcuCT-S433-800: 1A	800/1A	0.2	3.75VA	2.5m
AcuCT-S433-1000: 1A	1000/1A	0.2	5VA	2.5m
AcuCT-S433-1200: 1A	1200/1A	0.2	5VA	2.5m
AcuCT-S433-1500: 1A	1500/1A	0.2	5VA	2.5m
AcuCT-S433-2000: 1A	2000/1A	0.2	7.5VA	2.5m
AcuCT-S433-2500: 1A	2500/1A	0.2	15VA	2.5m
AcuCT-S433-3000: 1A	3000/1A	0.2	15VA	2.5m
AcuCT-S433-3500: 1A	3500/1A	0.2	15VA	2.5m
AcuCT-S433-4000: 1A	4000/1A	0.2	15VA	2.5m
AcuCT-S433-800: 100mA	800/100mA	0.2	10Ω	2.5m
AcuCT-S433-1000: 100mA	1000/100mA	0.2	10Ω	2.5m
AcuCT-S433-1200: 100mA	1200/100mA	0.2	10Ω	2.5m
AcuCT-S433-1500: 100mA	1500/100mA	0.2	10Ω	2.5m
AcuCT-S433-2000: 100mA	2000/100mA	0.2	10Ω	2.5m
AcuCT-S433-2500: 100mA	2500/100mA	0.2	10Ω	2.5m

AcuCT-S433-3000: 100mA	3000/100mA	0.2	10Ω	2.5m
AcuCT-S433-3500: 100mA	3500/100mA	0.2	10Ω	2.5m
AcuCT-S433-4000: 100mA	4000/100mA	0.2	10Ω	2.5m
AcuCT-S433-800: 80mA	800/80mA	0.2	10Ω	2.5m
AcuCT-S433-1000: 80mA	1000/80mA	0.2	10Ω	2.5m
AcuCT-S433-1200: 80mA	1200/80mA	0.2	10Ω	2.5m
AcuCT-S433-1500: 80mA	1500/80mA	0.2	10Ω	2.5m
AcuCT-S433-2000: 80mA	2000/80mA	0.2	10Ω	2.5m
AcuCT-S433-2500: 80mA	2500/80mA	0.2	10Ω	2.5m
AcuCT-S433-3000: 80mA	3000/80mA	0.2	10Ω	2.5m
AcuCT-S433-3500: 80mA	3500/80mA	0.2	10Ω	2.5m
AcuCT-S433-4000: 80mA	4000/80mA	0.2	10Ω	2.5m
AcuCT-S433-800: 333mV	800/333mV	0.2		2.5m
AcuCT-S433-1000: 333mV	1000/333mV	0.2		2.5m
AcuCT-S433-1200: 333mV	1200/333mV	0.2		2.5m
AcuCT-S433-1500: 333mV	1500/333mV	0.2		2.5m
AcuCT-S433-2000: 333mV	2000/333mV	0.2		2.5m
AcuCT-S433-2500: 333mV	2500/333mV	0.2		2.5m
AcuCT-S433-3000: 333mV	3000/333mV	0.2		2.5m
AcuCT-S433-3500: 333mV	3500/333mV	0.2		2.5m
AcuCT-S433-4000: 333mV	4000/333mV	0.2		2.5m

The values in the table are the additional burden values containing 2.5 meters leads.

Ordering Information

Model	- Rated Input	: Rated Output
AcuCT-S433	800: 800A	5A
	1000: 1000A	1A
	1200: 1200A	100mA
	1500: 1500A	80mA
	2000: 2000A	333mV
	2500: 2500A	
	3000: 3000A	
	3500: 3500A	
	4000: 4000A	

Ordering Example AcuCT-S433 - 3000 : 333mV

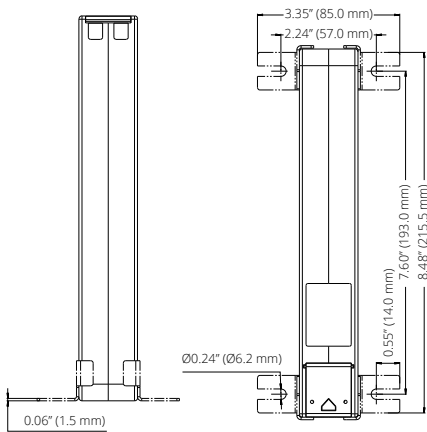


Accuenergy Inc.

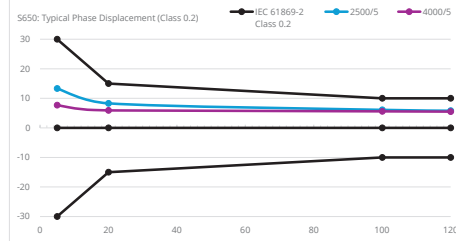
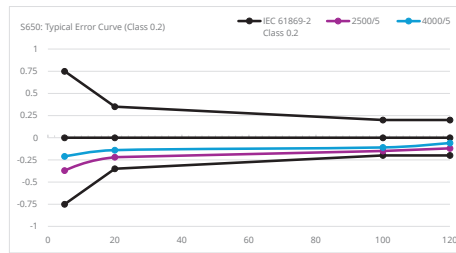
Los Angeles - Toronto - Pretoria
 North America Toll Free: 1-877-721-8908
 Web: www.accuenergy.com
 Email: marketing@accuenergy.com

Revision Date: March 2026 Version: 1.0.5
 Specs Subject To Change Without Notice.

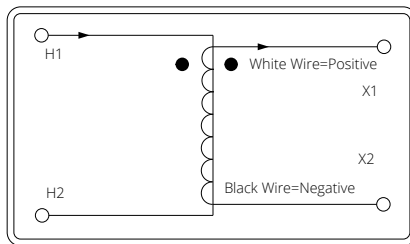
Mounting Dimension



Accuracy Class 0.2



Installation Instructions



Typical Parameter

MODEL	CURRENT RATIO	ACCURACY	BURDEN / RESISTANCE	LEAD LENGTH
AcuCT-S650-800: 5A	800/5A	0.2	3.75VA	2.5m
AcuCT-S650-1000: 5A	1000/5A	0.2	5VA	2.5m
AcuCT-S650-1200: 5A	1200/5A	0.2	5VA	2.5m
AcuCT-S650-1500: 5A	1500/5A	0.2	5VA	2.5m
AcuCT-S650-2000: 5A	2000/5A	0.2	7.5VA	2.5m
AcuCT-S650-2500: 5A	2500/5A	0.2	15VA	2.5m
AcuCT-S650-3000: 5A	3000/5A	0.2	15VA	2.5m
AcuCT-S650-3500: 5A	3500/5A	0.2	15VA	2.5m
AcuCT-S650-4000: 5A	4000/5A	0.2	15VA	2.5m
AcuCT-S650-800: 1A	800/1A	0.2	3.75VA	2.5m
AcuCT-S650-1000: 1A	1000/1A	0.2	5VA	2.5m
AcuCT-S650-1200: 1A	1200/1A	0.2	5VA	2.5m
AcuCT-S650-1500: 1A	1500/1A	0.2	5VA	2.5m
AcuCT-S650-2000: 1A	2000/1A	0.2	7.5VA	2.5m
AcuCT-S650-2500: 1A	2500/1A	0.2	15VA	2.5m
AcuCT-S650-3000: 1A	3000/1A	0.2	15VA	2.5m
AcuCT-S650-3500: 1A	3500/1A	0.2	15VA	2.5m
AcuCT-S650-4000: 1A	4000/1A	0.2	15VA	2.5m
AcuCT-S650-1000: 100mA	1000/100mA	0.2	10Ω	2.5m
AcuCT-S650-1200: 100mA	1200/100mA	0.2	10Ω	2.5m
AcuCT-S650-1500: 100mA	1500/100mA	0.2	10Ω	2.5m

AcuCT-S650-2000: 100mA	2000/100mA	0.2	10Ω	2.5m
AcuCT-S650-2500: 100mA	2500/100mA	0.2	10Ω	2.5m
AcuCT-S650-3000: 100mA	3000/100mA	0.2	10Ω	2.5m
AcuCT-S650-3500: 100mA	3500/100mA	0.2	10Ω	2.5m
AcuCT-S650-4000: 100mA	4000/100mA	0.2	10Ω	2.5m
AcuCT-S650-800: 80mA	800/80mA	0.2	10Ω	2.5m
AcuCT-S650-1000: 80mA	1000/80mA	0.2	10Ω	2.5m
AcuCT-S650-1200: 80mA	1200/80mA	0.2	10Ω	2.5m
AcuCT-S650-1500: 80mA	1500/80mA	0.2	10Ω	2.5m
AcuCT-S650-2000: 80mA	2000/80mA	0.2	10Ω	2.5m
AcuCT-S650-2500: 80mA	2500/80mA	0.2	10Ω	2.5m
AcuCT-S650-3000: 80mA	3000/80mA	0.2	10Ω	2.5m
AcuCT-S650-3500: 80mA	3500/80mA	0.2	10Ω	2.5m
AcuCT-S650-4000: 80mA	4000/80mA	0.2	10Ω	2.5m
AcuCT-S650-800: 100mA	800/100mA	0.2	10Ω	2.5m
AcuCT-S650-800: 333mV	800/333mV	0.2		2.5m
AcuCT-S650-1000: 333mV	1000/333mV	0.2		2.5m
AcuCT-S650-1200: 333mV	1200/333mV	0.2		2.5m
AcuCT-S650-1500: 333mV	1500/333mV	0.2		2.5m
AcuCT-S650-2000: 333mV	2000/333mV	0.2		2.5m
AcuCT-S650-2500: 333mV	2500/333mV	0.2		2.5m
AcuCT-S650-3000: 333mV	3000/333mV	0.2		2.5m
AcuCT-S650-3500: 333mV	3500/333mV	0.2		2.5m
AcuCT-S650-4000: 333mV	4000/333mV	0.2		2.5m

The values in the table are the additional burden values containing 2.5 meters leads.

Ordering Information

Model	- Rated Input	: Rated Output
AcuCT-S650	800: 800A	5A
	1000: 1000A	1A
	1200: 1200A	100mA
	1500: 1500A	80mA
	2000: 2000A	333mV
	2500: 2500A	
	3000: 3000A	
	3500: 3500A	
	4000: 4000A	

Ordering Example AcuCT-S650 - 3500 : 333mV



Accuenergy Inc.

Los Angeles - Toronto - Pretoria
 North America Toll Free: 1-877-721-8908
 Web: www.accuenergy.com
 Email: marketing@accuenergy.com

Revision Date: March 2026 Version: 1.0.6
 Specs Subject To Change Without Notice.