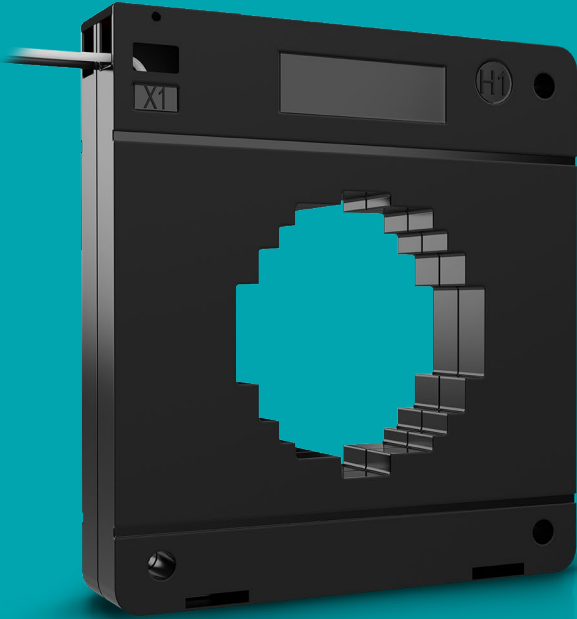


AcuCT-S220 Series

Switchgear Solid-Core Current Transformer



High precision solid-core current transformer for permanent installations. The AcuCT S220 features multiple input and output options in a small compact form factor. It provides consistent, reliable measurements across industrial and commercial for general metering or switchgear applications.

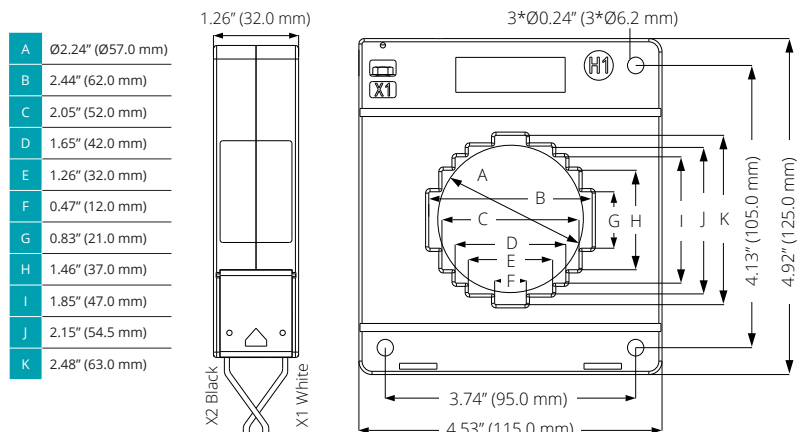
Features

- Accuracy class: 0.2
- Current input options: 200A, 250A, 300A, 500A, 600A, 800A, 1000A, 1200A, 1500A
- Choose from five output options: 5A, 1A, 100mA, 80mA, 333mV

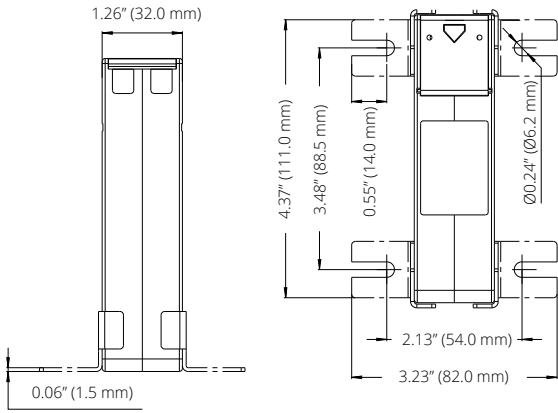
Specifications

RATED CURRENT	200A, 250A, 300A, 500A, 600A, 800A, 1000A, 1200A, 1500A
Current Range	5%-120% of Rated Current
Output	5A, 1A, 100mA, 80mA, 333mV
Accuracy	IEC 61869-2 Class 0.2
MECHANICAL/ENVIRONMENTAL	
Form Factor	Solid-Core CT
Window Size	Ø 57.0 mm (2.24")
Exterior Dimensions	115.0mm x 125.0mm x 32.0mm 4.53" x 4.92" x 1.26"
Case Material	Epoxy Encapsulated Housing
Lead Wires	2.5m (8ft), Twisted Pair, 18AWG
Operating Temperature	-25°C to 70°C / -13°F to 158°F
Storage Temperature	-40°C to 80°C / -40°F to 176°F
Operating Humidity	<90% RH
Installation Conditions	Indoor Use
ELECTRICAL	
Wire Polarity	White=Positive, Black=Negative
Phase Orientation	H1 Points Towards Source
Frequency Range	50-60Hz
Burden	2.5-5VA @1A, 5A and 10Ω@mA Output
Withstand Voltage	3,000VAC
Insulation Resistance	500V/100MΩ Min
SAFETY/COMPLIANCE	
Rated Voltage	600VAC, Rated CAT III
Certifications	CE, RoHS, UL Listed UL 2808, CSA 22.2

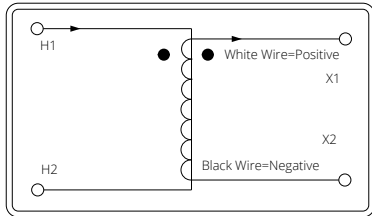
Dimensions



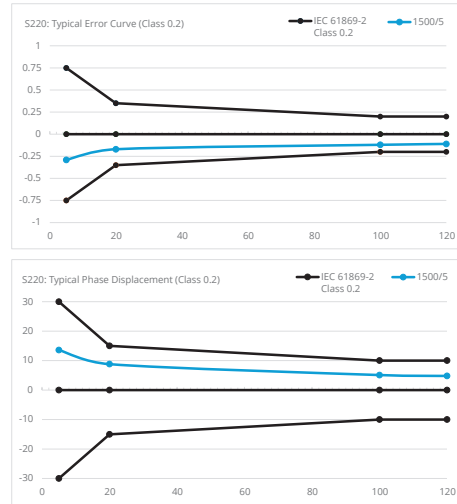
Mounting Dimension



Installation Instructions



Accuracy Class 0.2



Typical Parameter

MODEL	CURRENT RATIO	ACCURACY	BURDEN / RESISTANCE	LEAD LENGTH
AcuCT-S220-200: 5A	200/5A	0.2	2.5VA	2.5m
AcuCT-S220-250: 5A	250/5A	0.2	2.5VA	2.5m
AcuCT-S220-300: 5A	300/5A	0.2	2.5VA	2.5m
AcuCT-S220-500: 5A	500/5A	0.2	2.5VA	2.5m
AcuCT-S220-600: 5A	600/5A	0.2	2.5VA	2.5m
AcuCT-S220-800: 5A	800/5A	0.2	3.75VA	2.5m
AcuCT-S220-1000: 5A	1000/5A	0.2	5VA	2.5m
AcuCT-S220-1200: 5A	1200/5A	0.2	5VA	2.5m
AcuCT-S220-1500: 5A	1500/5A	0.2	5VA	2.5m
AcuCT-S220-200: 1A	200/1A	0.2	2.5VA	2.5m
AcuCT-S220-250: 1A	250/1A	0.2	2.5VA	2.5m
AcuCT-S220-300: 1A	300/1A	0.2	2.5VA	2.5m
AcuCT-S220-500: 1A	500/1A	0.2	2.5VA	2.5m
AcuCT-S220-600: 1A	600/1A	0.2	2.5VA	2.5m
AcuCT-S220-800: 1A	800/1A	0.2	3.75VA	2.5m
AcuCT-S220-1000: 1A	1000/1A	0.2	5VA	2.5m
AcuCT-S220-1200: 1A	1200/1A	0.2	5VA	2.5m
AcuCT-S220-1500: 1A	1500/1A	0.2	5VA	2.5m
AcuCT-S220-200: 100mA	200/100mA	0.2	10Ω	2.5m
AcuCT-S220-250: 100mA	250/100mA	0.2	10Ω	2.5m
AcuCT-S220-300: 100mA	300/100mA	0.2	10Ω	2.5m
AcuCT-S220-500: 100mA	500/100mA	0.2	10Ω	2.5m
AcuCT-S220-600: 100mA	600/100mA	0.2	10Ω	2.5m
AcuCT-S220-800: 100mA	800/100mA	0.2	10Ω	2.5m
AcuCT-S220-1000: 100mA	1000/100mA	0.2	10Ω	2.5m
AcuCT-S220-1200: 100mA	1200/100mA	0.2	10Ω	2.5m
AcuCT-S220-1500: 100mA	1500/100mA	0.2	10Ω	2.5m

AcuCT-S220-200: 80mA	200/80mA	0.2	10Ω	2.5m
AcuCT-S220-250: 80mA	250/80mA	0.2	10Ω	2.5m
AcuCT-S220-300: 80mA	300/80mA	0.2	10Ω	2.5m
AcuCT-S220-500: 80mA	500/80mA	0.2	10Ω	2.5m
AcuCT-S220-600: 80mA	600/80mA	0.2	10Ω	2.5m
AcuCT-S220-800: 80mA	800/80mA	0.2	10Ω	2.5m
AcuCT-S220-1000: 80mA	1000/80mA	0.2	10Ω	2.5m
AcuCT-S220-1200: 80mA	1200/80mA	0.2	10Ω	2.5m
AcuCT-S220-1500: 80mA	1500/80mA	0.2	10Ω	2.5m
AcuCT-S220-200: 333mV	200/333mV	0.2		2.5m
AcuCT-S220-250: 333mV	250/333mV	0.2		2.5m
AcuCT-S220-300: 333mV	300/333mV	0.2		2.5m
AcuCT-S220-500: 333mV	500/333mV	0.2		2.5m
AcuCT-S220-600: 333mV	600/333mV	0.2		2.5m
AcuCT-S220-800: 333mV	800/333mV	0.2		2.5m
AcuCT-S220-1000: 333mV	1000/333mV	0.2		2.5m
AcuCT-S220-1200: 333mV	1200/333mV	0.2		2.5m
AcuCT-S220-1500: 333mV	1500/333mV	0.2		2.5m

The values in the table are the additional burden values containing 2.5 meters leads.

Ordering Information

Model	-	Rated Input	:	Rated Output
AcuCT-S220		200: 200A		5A
		250: 250A		1A
		300: 300A		100mA
		500: 500A		80mA
		600: 600A		333mV
		800: 800A		
		1000: 1000A		
		1200: 1200A		
		1500: 1500A		

Ordering Example AcuCT-S220 500 : 333mV



Accuenergy Inc.
 Los Angeles - Toronto - Pretoria
 North America Toll Free: 1-877-721-8908
 Web: www.accuenergy.com
 Email: marketing@accuenergy.com

Revision Date: March 2026 Version: 1.0.6
 Specs Subject To Change Without Notice.